

WLI-PCM-L11/G PCMCIA card Setup with Apple OS 9.x

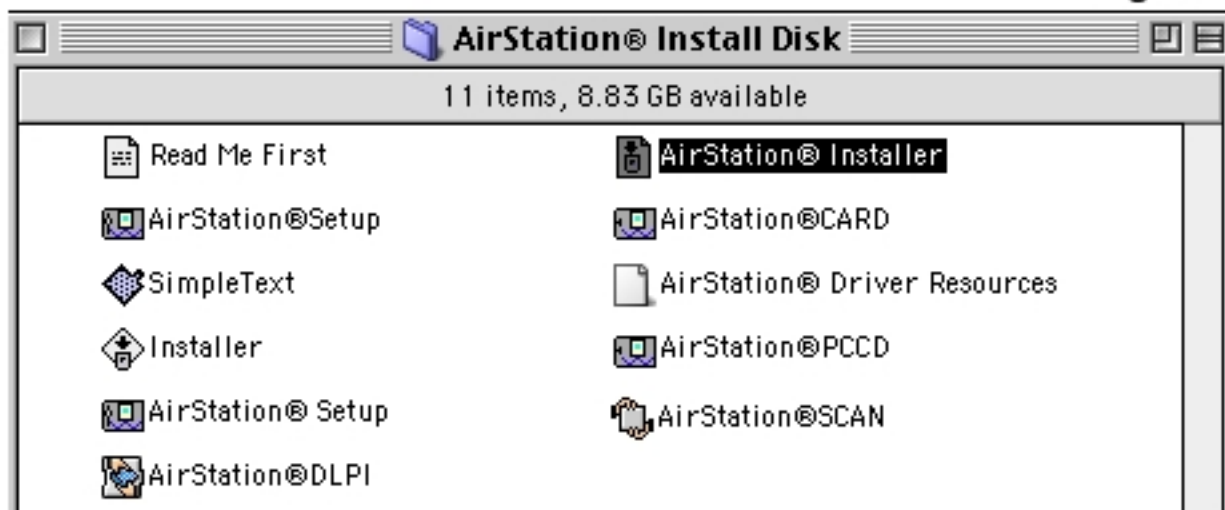
- 1) Close and save any documents or work in progress before install.
- 2) Create a new folder on your desktop. The installation software requires this folder to be named "AirStation". (Go to "File", scroll to "New Folder" and select. Name the new folder "AirStation".)
- 3) Download the "ASPB6004.hqx" file from "<http://www.buffalotech.com/drivers/index.cfm>" on the Buffalo Technology website to the new "AirStation" folder. "ASPB6004.hqx" usually opens automatically with Stuffit Expander. If you don't have Stuffit, it is available for free at "<http://www.stuffit.com/expander/index.html>". Download and install Stuffit, if needed. Open the "ASPB6004.hqx" file. Stuffit will create a file called "AirStation Install Disk.sit" and a folder called "AirStation Install Disk" inside the "AirStation" folder.
- 4) Double-Click on the "AirStation Install Disk" folder to open. (Figure 1)



Figure 1

- 5) Double-Click on "AirStation Installer". (Figure 2)

Figure 2



- 6) Figure 3 shows the Easy Install for G3 Series PowerBooks. Other Powerbooks may show a slightly different screen. Click on "Install" on the lower right of the screen.



Figure 3

- 7) Select "Continue". (Figure 4)



Figure 4

- 8) Select "Restart". Your Mac will reboot now. (Figure 5)
Insert the Buffalo WLI-PCM-L11/G into the lower PCMCIA slot of your PowerBook as it restarts.

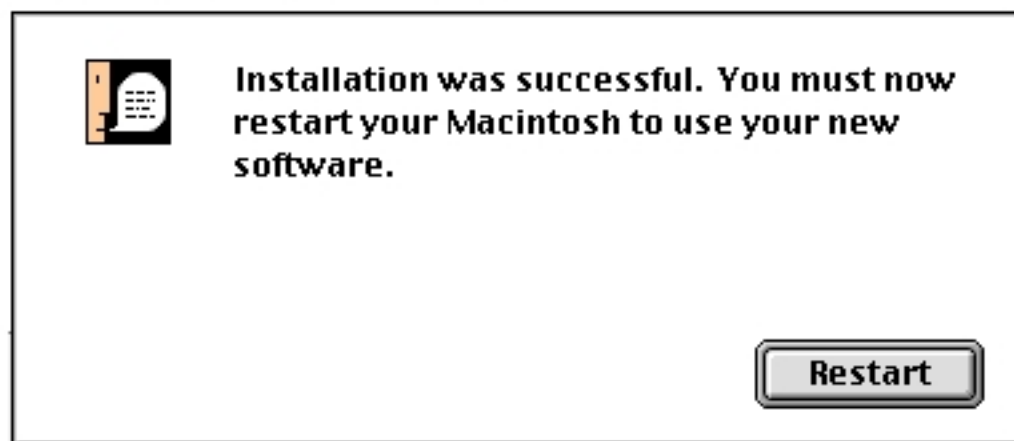


Figure 5

- 9) Go to the upper left corner of your desktop and select the Apple icon. Scroll down to "Control Panels", then to "AppleTalk" and select to open the AppleTalk Control Panel. Select "AirStation" and save. (Figure 6)



Figure 6

- 10) Find the "WLI-PCM-L11G-US" (128bit WEP) or "WLI-PCM-L11" (40bit WEP) icon on your desktop. Double click on the icon to open your TCP/IP Control panel. (Figures 7 and 8)



Figure 7



Figure 8

- 11) Select "AirStation" next to "Connect via". (Figure 9)

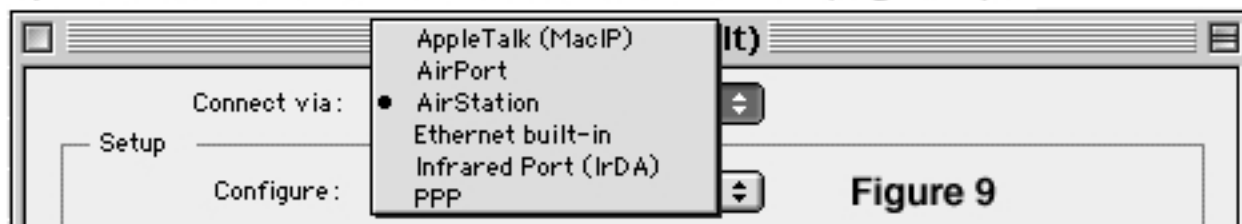
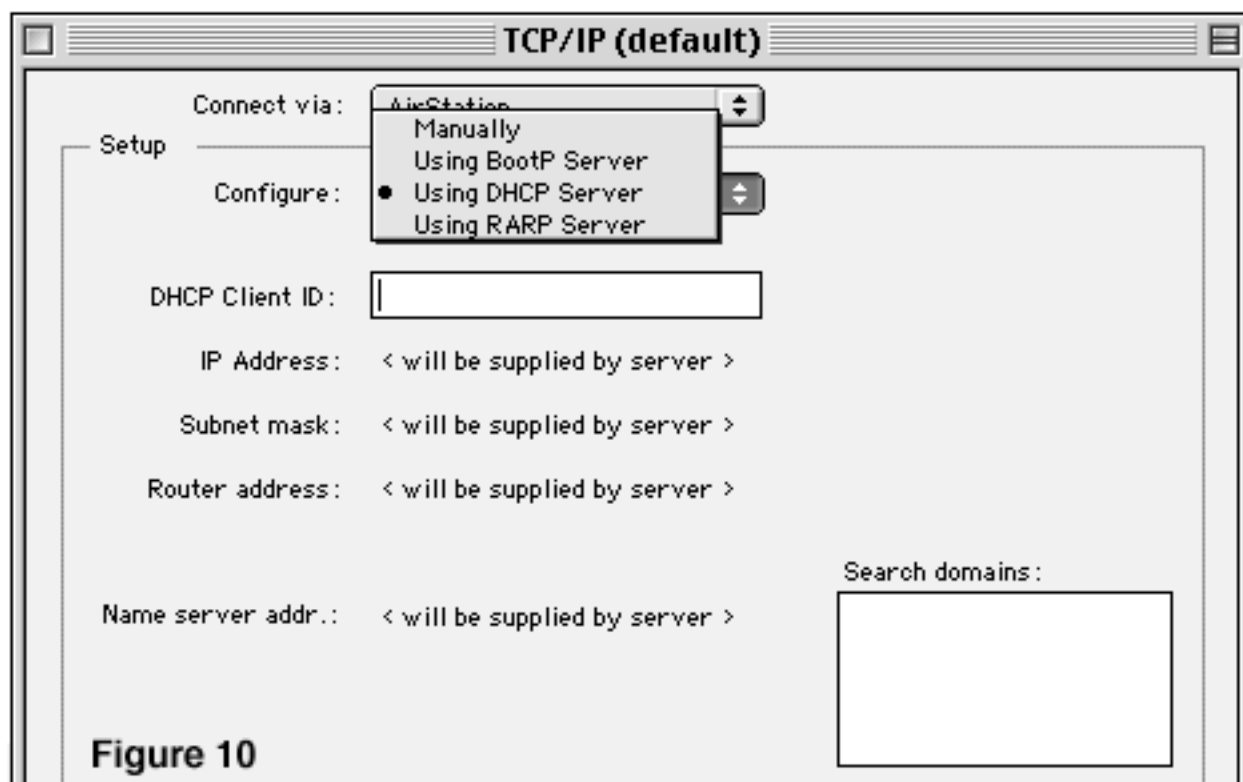


Figure 9

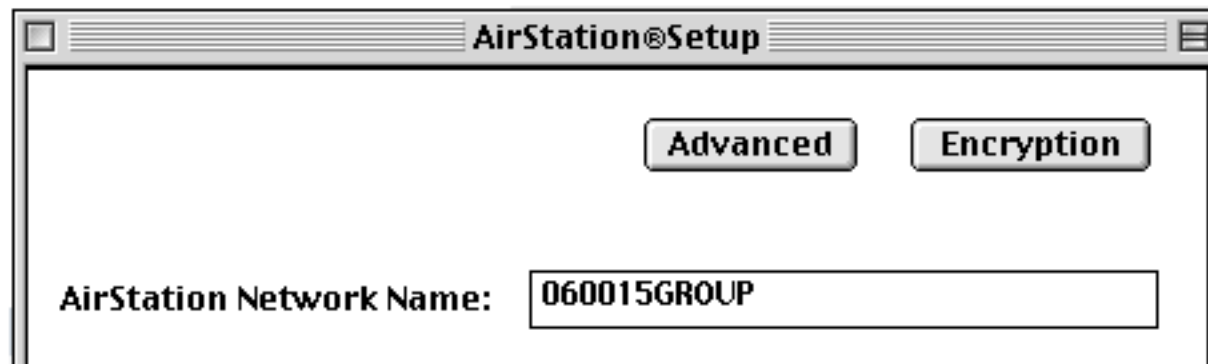
- 12) Depending upon your network requirements, select "Using DHCP Server" or "Manually" next to "Configure". If "Manually" is selected, you will need to input the appropriate network addresses and mask supplied by your ISP or network administrator, before closing the TCP/IP Control panel. When finished, close the Control panel and save when prompted. (Figure 10)



- 13) Go to the Apple icon on the upper left corner of your desktop, select, scroll down to "Control Panels" and select "AirStation Setup".

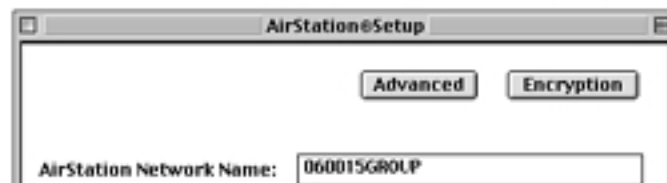
(Figure 11)  Figure 11

- 14) This opens up the AirStation Setup Control Panel. (Figure 12)



- 15) Input the Access Point network name beside "AirStation Network Name". If you don't know the name of the Access Point, input the word "any" in lower case letters (Figure 13).

Figure 13



For Buffalo AirStation names, use the last six digits of the LAN MAC address (located on a sticker positioned on the back of the AirStation), followed by the word "GROUP" as shown in Figure 13.

If your Access Point isn't using WEP (Wired Equivalent Privacy), close the window and select "Restart". Your PowerBook will connect to your Access Point after restart. You will see the power and activity lights on your Buffalo card after restart. Installation of the card is now finished.

Using WEP with the Buffalo PCMCIA card.

Determine the firmware revision of your AirPort Base Station. Open the AirPort Admin Utility (found in the AirPort folder). The Admin Utility will search for the Base Station automatically. After the Base Station is found, select "Base Station" in the menu bar at the top of the screen, then select "Get Info". Next to "Description" there will be a series of numbers (I.E. V3.05 or V3.83). If you have V3.05, you have an original Base Station and firmware. If you have any other number, you have an upgraded original Station or the dual-ethernet Station.

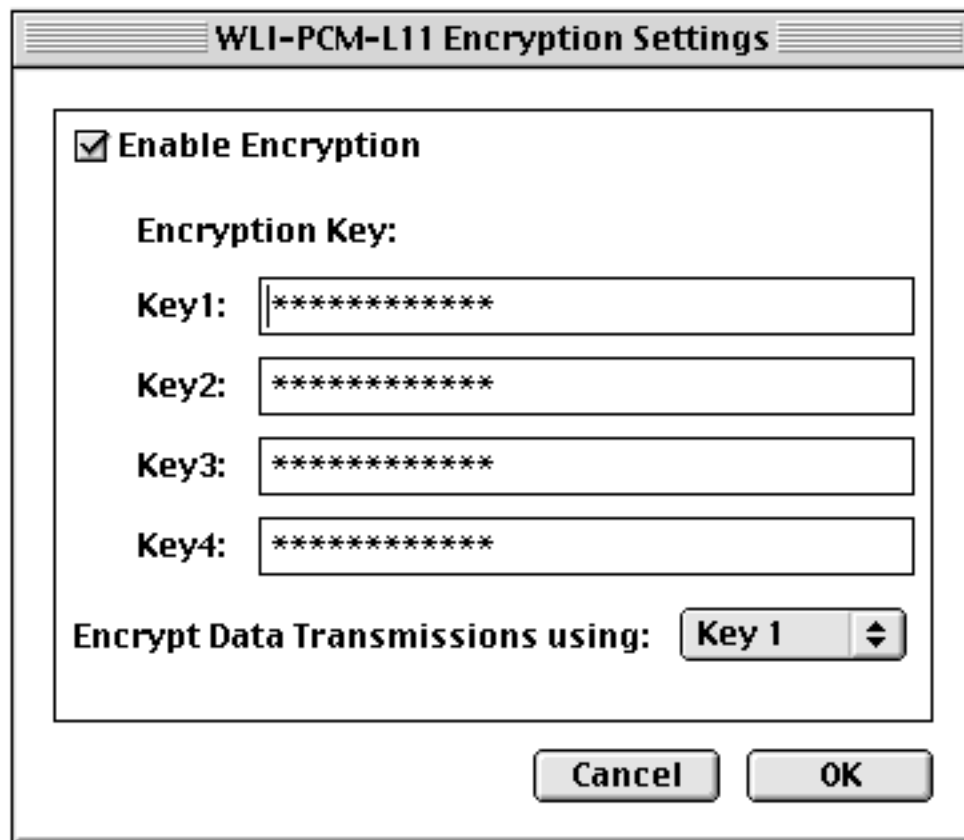
If you are connecting to a Buffalo AirStation or an original Apple AirPort Base Station (gray), with the original installed firmware (not upgraded firmware), continue with Step 16.

If you are connecting to an original Apple AirPort Base Station with updated firmware or to the dual ethernet port Apple Base Station, skip to Step 19, Page 7.

WEP (Wired Equivalent Privacy) Setup

- 16) In the AirStation Setup Control Panel, select "Encryption".
(Figure 13 Above)

- 17) Place a check in the box by "Enable Encryption". (Figure 14)
The box next to "Key1" will be active. Type your WEP code in here.
The WEP code must be the same as the code in your Access Point.
ASCII codes are case sensitive; Hex codes are not. For Hex codes,
type 0x (zero "x") and no space, before typing your hex code.
For ASCII: 40 bit WEP uses 5 characters.
128 bit WEP uses 13 characters.
For Hex: 40 bit WEP uses 10 characters, in addition to the "0x".
128 bit WEP uses 26 characters, in addition to the "0x".



WLI-PCM-L11 Encryption Settings

Enable Encryption

Encryption Key:

Key1: *****

Key2: *****

Key3: *****

Key4: *****

Encrypt Data Transmissions using: Key 1

Cancel OK

Figure 14

- 18) When finished, select "OK" to close the window. Then close the
AirStation Setup Control panel.
Select "Restart". Your PowerBook will restart and connect to the
Access Point.
Installation is now finished.

19) Find out the value of the "Equivalent Network Password" for the AirPort Base Station. Using a Mac with an AirPort card installed, open the AirPort Admin Utility. After the Base Station has been found, select "Configure". Select "BaseStation" in the menu at the top of the screen, then select "Equivalent Network Password". A window will open with a ten digit alphanumeric near the bottom (Picture 15). Use this number for your WEP password with "0x" (zero x) preceding the password (no spaces).



Picture 15

Equivalent Network Password

20) Using the Mac with the Buffalo card, open the AirStation Control Panel. Select "Encryption".

Place a check in the box beside "Enable Encryption" (Figure 14, Page 6). Type your 10 digit code (found in step 19), with the "0x" preceding it, into the Key1, Key2, Key3, and Key4 boxes. Select "Key 1" beside "Encrypt Data Transmissions using". Select "OK". Close the AirStation Control Panel and restart the PowerBook. Installation is now finished.